

COMMUNITY ENGAGEMENT PROPOSAL



DENVER PHILHARMONIC
ORCHESTRA





OUR HISTORY

We may be one of Denver's oldest orchestras, but we certainly don't act our age.

Dr. Antonia Brico, the first woman to conduct the New York Philharmonic in 1938, settled in Denver after conducting professional orchestras across Europe and the U.S.

Antonia debuted the Denver Philharmonic (then-named Denver Businessmen's Orchestra) in 1948 to a packed auditorium explaining the need for a classical music venue to showcase the talents of local, classically trained musicians "with no place to play." Antonia would remain at the helm of the orchestra until her retirement in the mid-1980s.

In 2016, we outgrew our home of more than 50 years at KPOF Hall, and we moved into our new space becoming the resident orchestra at Central Presbyterian performing on the newly constructed Antonia Brico Stage in downtown Denver.

While we have a 70-year history in our community, our mission is to continually redefine the way our community experiences and engages with classical music.



Antonia Brico leads the Denver Businessmen's Orchestra which today is known as the Denver Philharmonic.

Contact:

720-440-0818 - roger@denverphilharmonic.org



DENVER PHILHARMONIC ORCHESTRA

FIRST PLACE

ICTUS INTERNATIONAL
MUSIC COMPETITION 2017

f i t e @denverphilorch #dpotweets

720-440-0818

roger@denverphilharmonic.org

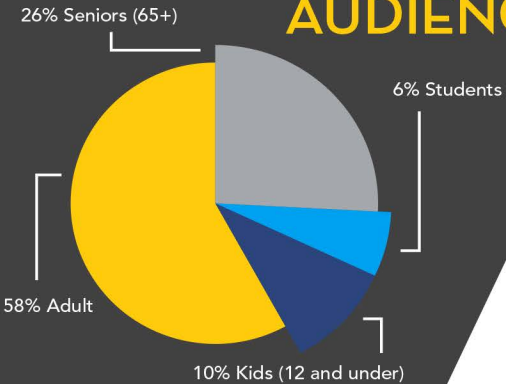
Founded in

1948 by

ANTONIA BRICO

the first woman to
conduct the New York
Philharmonic Orchestra

AUDIENCE



Based on 2016/17 Ticket Sale Demographics

MISSION:

To continually redefine the way our community experiences and engages with classical music

84

MUSICIANS

10 performances

From Baroque
to the 21st Century!

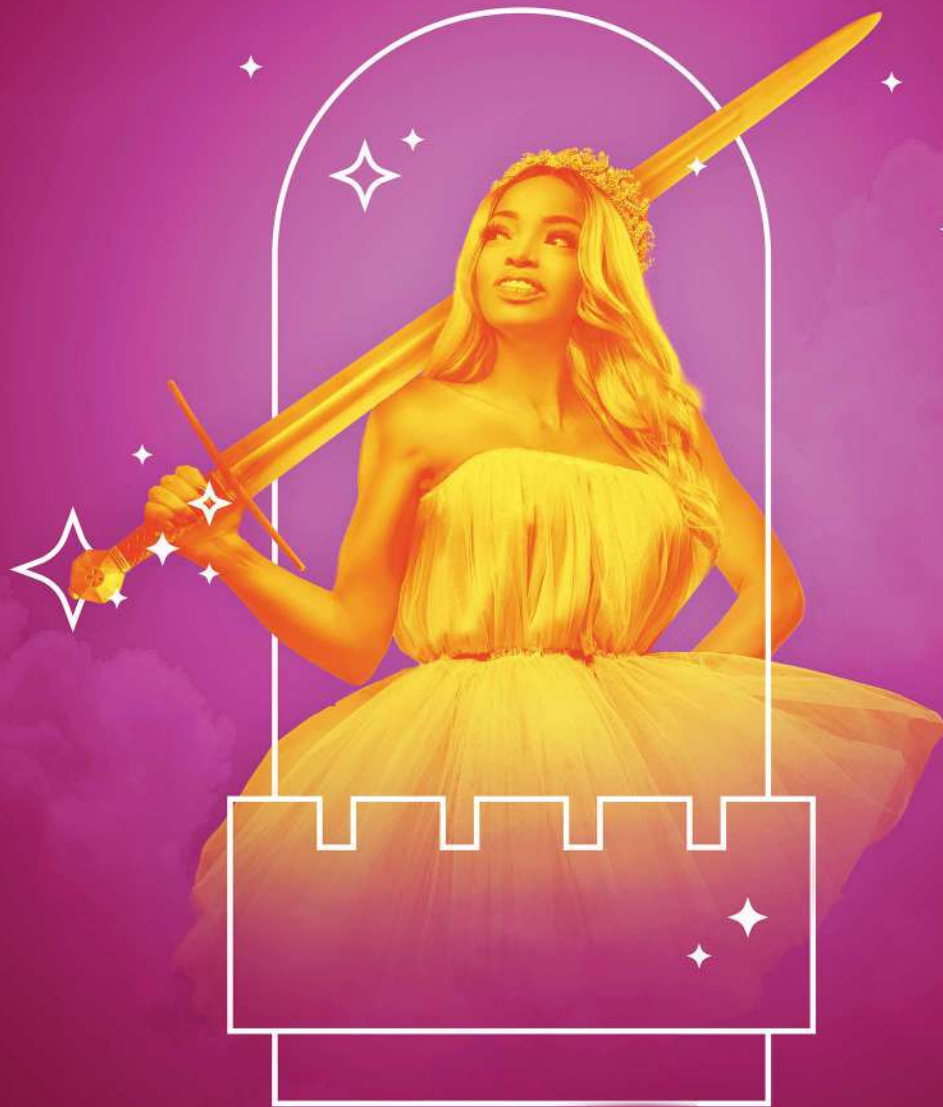
ONE INTERNATIONAL TOUR OF

CHINA

**“EVERYONE’S FAVORITE
COMMUNITY ORCHESTRA.”**

— *The Denver Post*

2 EMMY®
AWARDS
WHAT?



PRESENTING MAIN STAGE CONCERT

\$5,000

Your support at \$5,000 will underwrite a concert of your choice, covering expenses such as transportation and lodging for guest artists, renting and tuning a Steinway grand piano, sheet music and royalties, and so much more

- **Presenting Sponsor** of any concert (sans Holiday Cheer!)
- **6 season tickets**
- **Corporate Promo Code** for all concerts
- **8 Tickets** to Fall and Spring Fundraisers
- **Announcement** and acknowledgement at intermission
- **Logo and Table** present in the lobby
- **Prominent Logo** on website and marketing emails
- **Logo + Link** on website and marketing emails
- **2+ Social Media** posts
- **Program Listing**



Contact:

720-440-0818 - roger@denverphilharmonic.org



PRESENTING HOLIDAY CHEER!

\$7,500

Your support at \$7,500 will take part across TWO performances of our most highly attended concert of the season! From shimmering musical celebrations of Hanukkah to radiant Christmas medleys, this concert welcomes all backgrounds for a festive celebration for the season!

- **Presenting Sponsor** of "Holiday Cheer"
- **6 season tickets**
- **Corporate Promo Code** for all concerts
- **8 Tickets** to Fall and Spring Fundraisers
- **Announcement** at each Holiday Cheer! concert
- **Logo and Table** present in the lobby
- **Prominent Logo** on website and marketing emails
- **Logo + Link** on website and marketing emails
- **2+ Social Media** posts
- **Program Listing**

Contact:

720-440-0818 - roger@denverphilharmonic.org



TITLE/PRESENTING MAIN STAGE SERIES

\$20,000

Your support at \$20,000 will underwrite the entire season, covering expenses such as transportation and lodging for guest artists, off-site storage, renting and tuning a Steinway grand piano, sheet music and royalties, and so much more!

- Title/Presenting Sponsor of full season
- Coffee with the Maestro
- Private Quartet Performance
- 12 season tickets
- Corporate Promo Code for all concerts
- 12 Tickets to Fall and Spring Fundraisers
- Announcement and acknowledgement at intermission
- Logo and Table present in the lobby
- Prominent Logo on website and marketing emails
- Logo + Link on website and marketing emails
- 2+ Social Media posts
- Program Listing

Contact:

720-440-0818 - roger@denverphilharmonic.org



PROGRAM SPONSOR: MORE THAN MUSIC

\$4,000

Your support at \$4,000 will underwrite free, family friendly “More Than Music” activities before each concert. These opportunities provide a more engaging concert experience for all patrons such as an instrument petting zoo, photo booths, pre-concert chats, visit from Santa Claus, and more!

- Program Sponsor of all “More Than Music” events
- 4 season tickets
- Corporate Promo Code for all concerts
- 6 Tickets to Fall and Spring Fundraisers
- Announcement at every concert
- Logo + Link on website and marketing emails
- 2+ social media posts
- Program Listing

Contact:

720-440-0818 - roger@denverphilharmonic.org



PROGRAM SPONSOR: **YOUTHTIX**

\$4,000

Your support at \$4,000 will provide complimentary tickets to all youth 18 and under, which will aid in directly exposing young youth to classical music at an early age when their families may otherwise not be able to afford to attend a concert.

- **Program Sponsor** of YouthTIX program
- **4 season tickets**
- **Corporate Promo Code** for all concerts
- **6 Tickets** to Fall and Spring Fundraisers
- **Announcement** at every concert
- **Logo + Link** on website and marketing emails
- **2+ social media** posts
- **Program Listing**

Contact:

720-440-0818 - roger@denverphilharmonic.org



PROGRAM SPONSOR: **PROGRAM NOTES**

\$4,000

Your support at \$4,000 will underwrite original, digital program notes that break down barriers of classical music that both concert veterans and newbies can more richly understand and enjoy the music. Program notes will be provided in English and Spanish for Denver's diverse populations as well as in large print and Braille regardless of accommodation request.

- **Presenting Sponsor** of program notes
- **4 season tickets**
- **Corporate Promo Code** for all concerts
- **6 Tickets** to Fall and Spring Fundraisers
- **Announcement** at every concert
- **Logo + Link** on website and marketing emails
- **2+ social media** posts
- **Program Listing**



Contact:

720-440-0818 - roger@denverphilharmonic.org



CORPORATE PARTNER

\$2,500

Your support at \$2,500 will help us further our mission to continually redefine the way our community experiences and engages with classical music. Our exciting initiatives include our International Conducting Workshop and Competition, our work expanding our accessibility accommodations, and more!

- 2 season tickets
- **Corporate Promo Code** for all concerts
- 4 Tickets to Fall and Spring Fundraisers
- **Announcement** at every concert
- **Logo + Link** on website and marketing emails
- **Program Listing**



Contact:

720-440-0818 - roger@denverphilharmonic.org

Sponsor Benefits	Main Stage Series \$20,000	Main Stage Concert \$5000 per 1 concert (\$7500 Holiday Cheer!)	Program \$4,000	Corporate Partner \$2,500
Private Quartet Performance	X			
Coffee with Maestro	X			
Season Tickets	12	6	4	2
Corporate Promo Code	X	X	X	X
Fundraiser Tickets	12	8	6	4
Lobby Presence	Logo + Table	Logo + Table	Logo	
Concert Announcement	Title/Presenting	Presenting	Program	Supporting
Email Blast	1 Email Specific Blast + Prominent Logo + Logo & Link	Prominent Logo + Logo & Link	Logo & Link	Logo & Link
Website Link	Logo & Link	Logo & Link	Logo & Link	Logo & Link
Social Media Posts	6 + Various	2 + Various	2 + Various	
Program Listing	X	X	X	X

THANK YOU!

QUESTIONS?

Contact Roger Haak - Executive Director
720-440-0818
roger@denverphilharmonic.org

